

# TURCK

Your Global Automation Partner

## Powerfast™ Family of Industrial Connectors Overview



### Fast & Flexible Field-Ready Power Distribution

TURCK's Powerfast family of industrial solutions includes a wide range of connectors, cordsets, field wireables, tees, receptacles and splitters designed to work together. These rugged solutions simplify power distribution across machines and plants, supporting decentralized and modular system designs. By eliminating the need for conduit and hardwiring, Powerfast connectors enable faster installation, reduced labor costs and offer greater system flexibility. This family includes a wide range of connector sizes: M12, M16, M23, M40, A-Size, C-Size and D-Size.

#### Proven Performance + Customization

Built for a long service life, TURCK's flex-rated cables are rigorously tested and validated. Other solutions on the market may claim similar ratings without

substantiated testing. The cable we use with our Powerfast connectors offers flex life into the millions of flex cycles. Standard black power cords are available in addition to custom mold colors, contact carriers and cable jacket colors to match manufacturer-specific requirements.

#### Powering a Wide Range of Industries

From conveying systems and machine building to packaging, palletizing and sorting operations, Powerfast connectors are also well-suited for demanding applications such as food and beverage and automotive manufacturing where durability is essential. Whether used by automation system designers, integrators or OEMs, Powerfast provides a scalable solution for powering motors, lighting, heaters and other electrical devices.

### Benefits

- No conduit required – streamline installation and reduce costs
- Tool-free connectivity – quick, reliable connections without specialized tools
- No threading or wire pulling – eliminate time-consuming manual processes
- No certified electrician required – reduce installation complexity and labor costs
- Rugged protection – IP67, IP68 and IP69K ratings (depending on product variant)
- UL-certified solutions – compliant with UL 2237 or UL 2238 standards

# Explore the Full Product Line

Across all connector types, Powerfast offers a full range of components including cordsets, receptacles, field wireable connectors, tees and splitters to support complete system integration.



## M12 Powerfast

Compact and efficient, M12 Power connectors deliver high performance in space-constrained applications, making them ideal for modern automation and distributed I/O systems. This line of popular connectors is used in decentralized power distribution applications where space is limited but reliable performance is still critical. They enable plug-and-play installation, reduce wiring complexity, and provide reliable IP67/IP68-rated protection in tight spaces.



## M16 Powerfast

Designed for mid-range power requirements, M16 connectors provide a reliable and durable solution for a wide range of industrial environments. They are typically used where more current capacity is needed than M12, but a compact footprint is still important. The M16 line offers rugged IP67 protection and UL-listed reliability while fitting into tighter spaces such as a control cabinet. Other applications include conveying and material handling equipment – where durability and space efficiency both matter.



## 7/8" A-size Powerfast

A versatile solution with industry-leading current ratings, A-Size connectors support flexible system designs and higher power distribution capabilities. TURCK offers the highest-rated electrical performance for A-Size: up to 21 Amps, providing greater amperage and power delivery to more components. The typical rating is 15 Amps. These connectors can be used in trays to power large payload assembly robots requiring high amperage.



## M23 Powerfast

Heavy-duty M23 connectors are designed for high-power applications. M23 connectors offer robust construction, secure locking mechanisms and IP67 protection, making them well-suited for environments with vibration, dust and moisture. They are ideal for servo motors and drives where consistent, high-power connections are critical for motion control. In addition, they can be used in robotics and assembly systems as well as large machines requiring rugged, high-capacity connectors.

Continued on next page

## Explore the Full Product Line



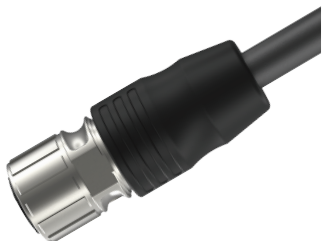
### **1 1/8", C-Size Powerfast**

Built for advanced motor control, C-Size connectors are Variable Frequency Drive (VFD)-compatible. These connectors are ideal in environments where motors need precise speed control and consistent power delivery, such as conveyors, pumps and fans. Additional applications include packaging equipment – where speed and torque vary as well as automation systems that integrate motor control and power in a single connection.



### **1 3/8", D-Size Powerfast**

Engineered for higher power demands, D-Size connectors offer robust performance and increased current capacity for more demanding applications. We provide the highest-rated electrical performance in the industry for D-Size, enabling greater amperage and power delivery to more components: D-Size connectors are rated up to 40 Amps – the typical rating is 35 Amps. They are commonly used on conveyor lines where cables run along conveyors with tee or splitter connections.



### **M40 Powerfast**

For large-scale and high-capacity power distribution, M40 connectors deliver dependable performance in the most demanding industrial setups. The M40 connectors are used in high-current, heavy-duty industrial power distribution applications where large connectors and robust performance are required. Examples include large machinery and equipment, main power distribution points – feeding power to multiple subsystems or machines as well as heavy automation and manufacturing lines.